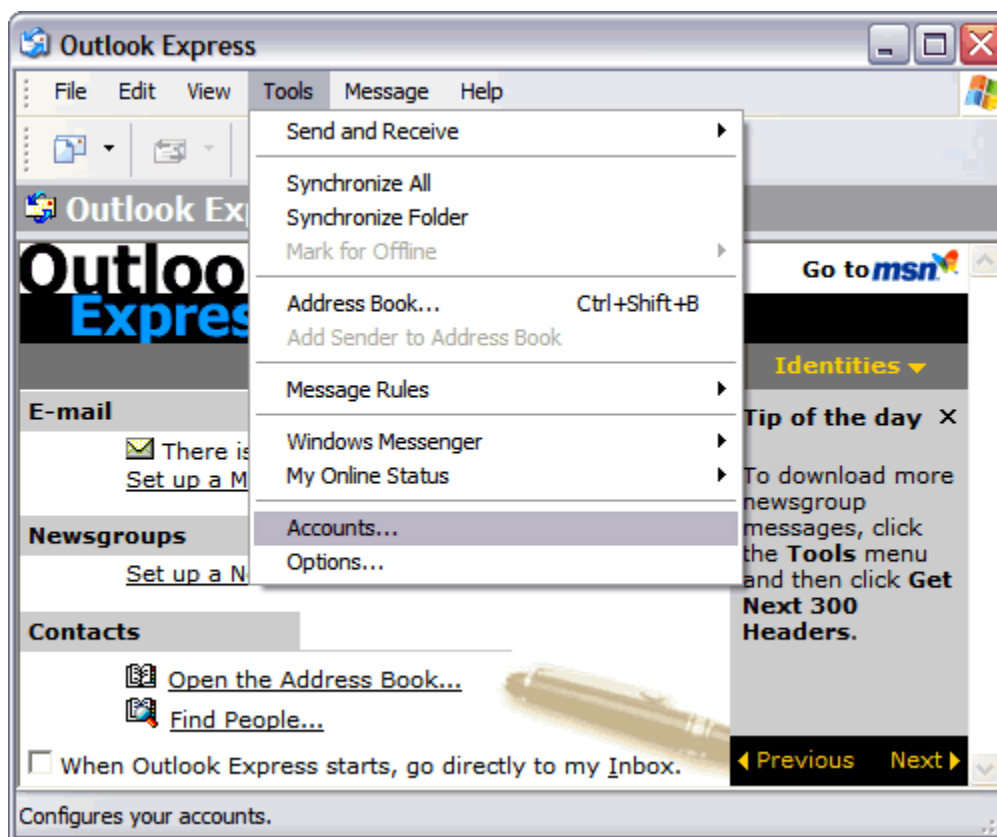


# Setting Up Your E-mail in MS Outlook Express

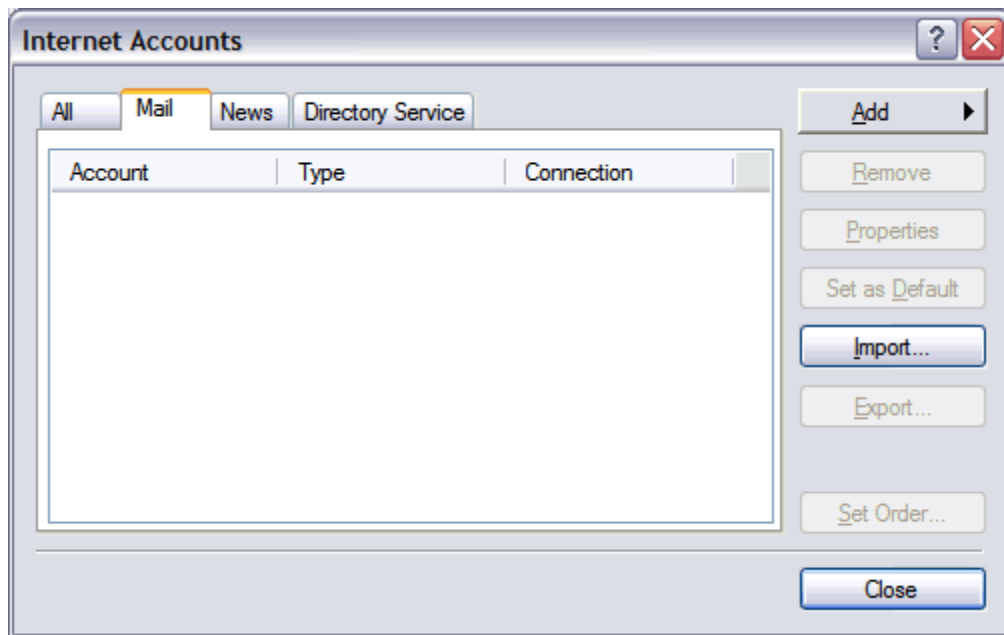
This tutorial shows you how to set up Microsoft Outlook Express 6 to work with your e-mail account. This tutorial focuses on setting up Microsoft Outlook Express 6, but these settings are similar in other versions of Microsoft Outlook Express. You can set up previous versions of Microsoft Outlook Express by using the settings in this tutorial.

## To Set Up Your E-mail Account in Microsoft Outlook Express

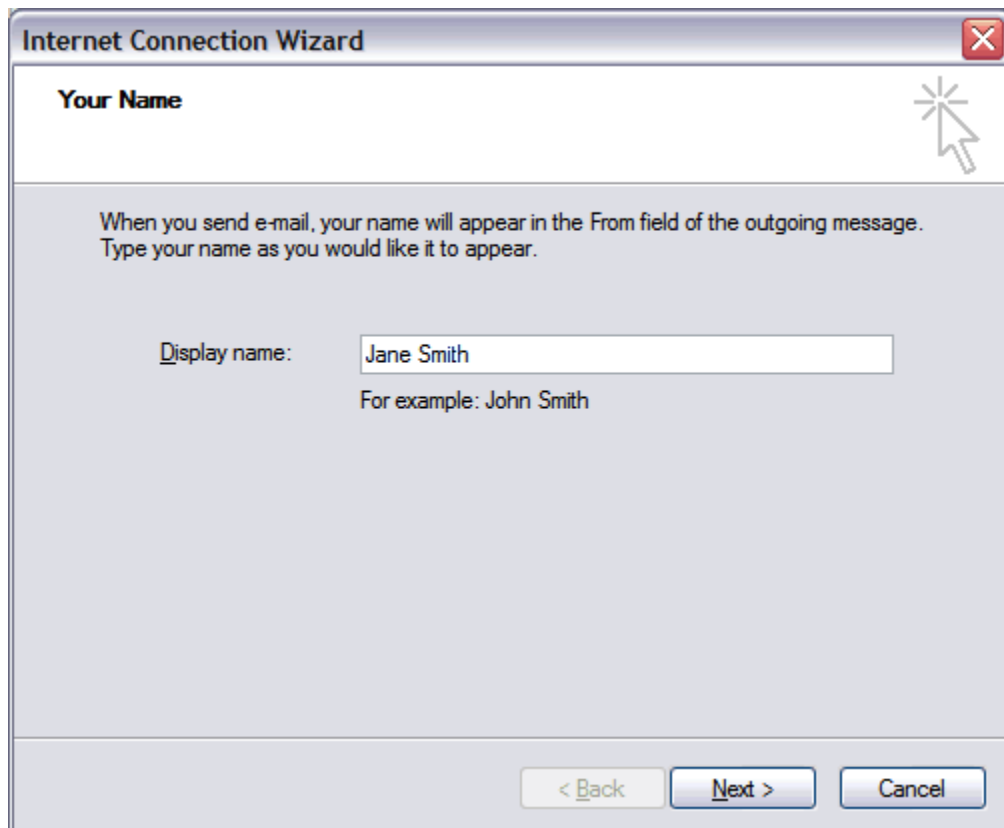
1. In Microsoft Outlook Express, from the Tools menu, select **Accounts**.



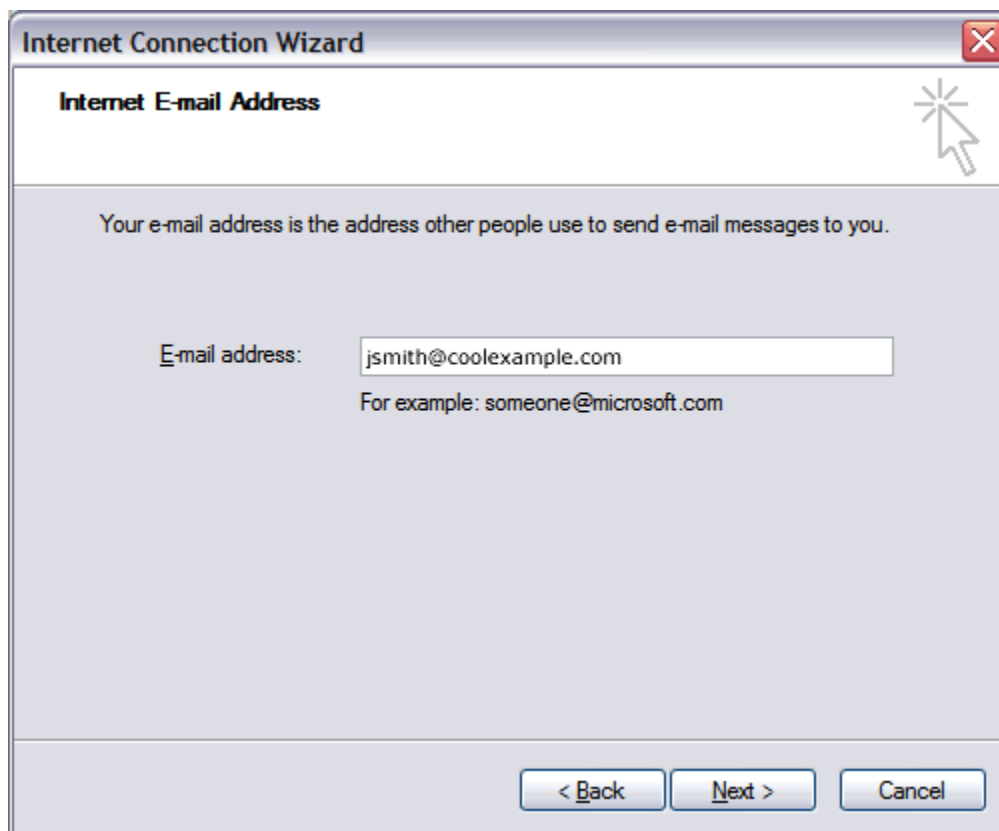
2. Go to the **Mail** tab and from the **Add** menu, select **Mail**.



3. In the Display Name field, enter your full name and click **Next**.



4. In the E-mail address field, enter your email address and click **Next**.



5. On the E-mail Server Names page, enter your information as follows:

**My incoming mail server is a**

Select **POP3**.

**Incoming mail (POP3, IMAP or HTTP) server**

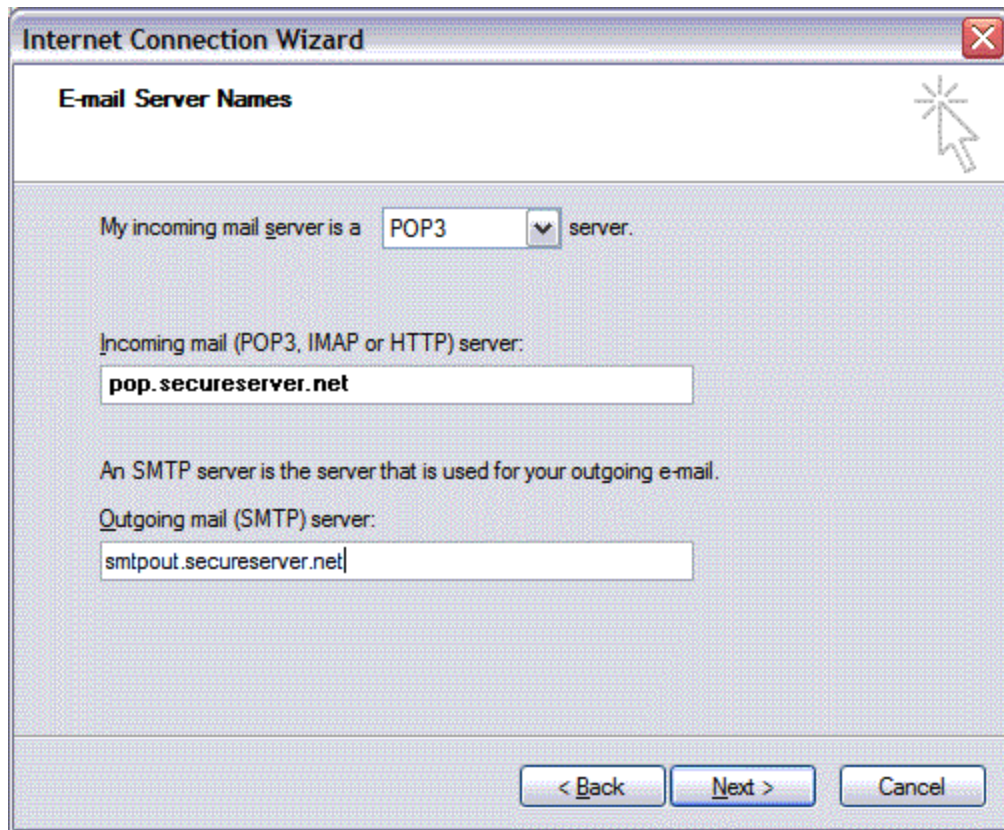
Type **pop.secureserver.net**.

**Outgoing mail (SMTP) server**

Type **smtpout.secureserver.net**.

Click **Next**.

**NOTE:** "smtpout.secureserver.net" is an SMTP relay server. In order to use this server to send e-mails, you must first activate SMTP relay on your e-mail account. Log on to your Manage Email Accounts page to set up SMTP relay. If you do not have SMTP relay set up and your Internet Service Provider (ISP) allows it, you can use the outgoing mail server for your Internet Service Provider. Contact your Internet Service Provider to get this setting.



The screenshot shows the "Internet Connection Wizard" dialog box, specifically the "E-mail Server Names" step. The window title is "Internet Connection Wizard" and the subtitle is "E-mail Server Names". The main content area contains the following text and input fields:

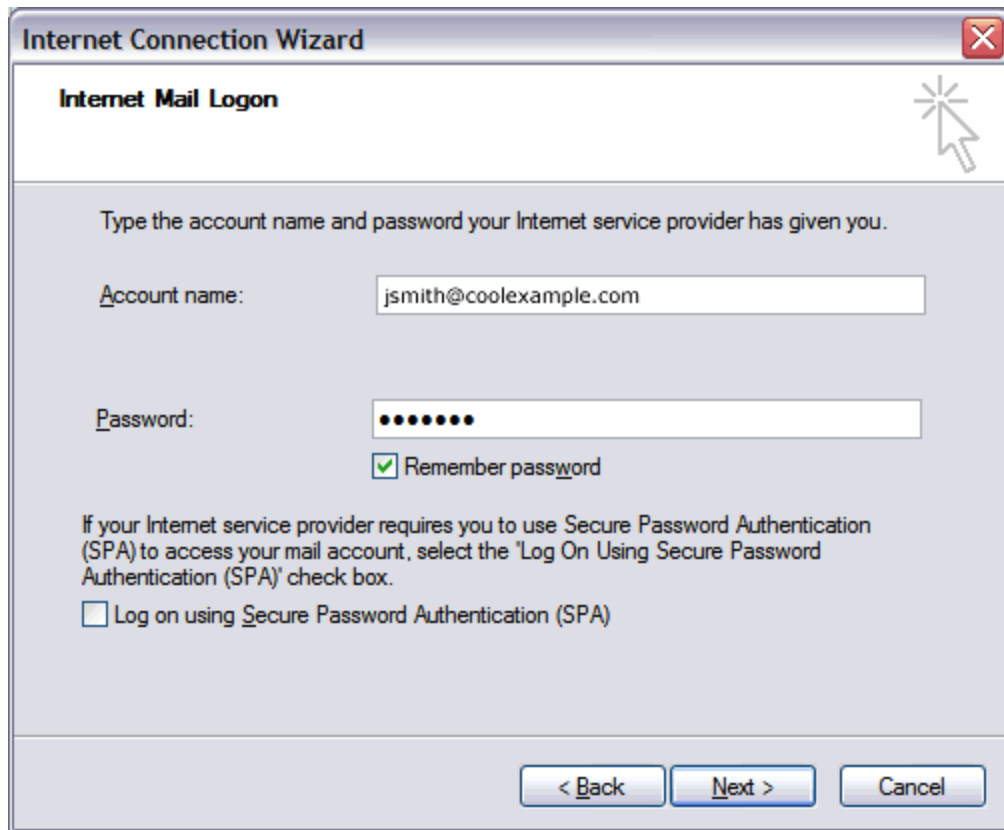
My incoming mail server is a  server.

Incoming mail (POP3, IMAP or HTTP) server:

An SMTP server is the server that is used for your outgoing e-mail.  
Outgoing mail (SMTP) server:

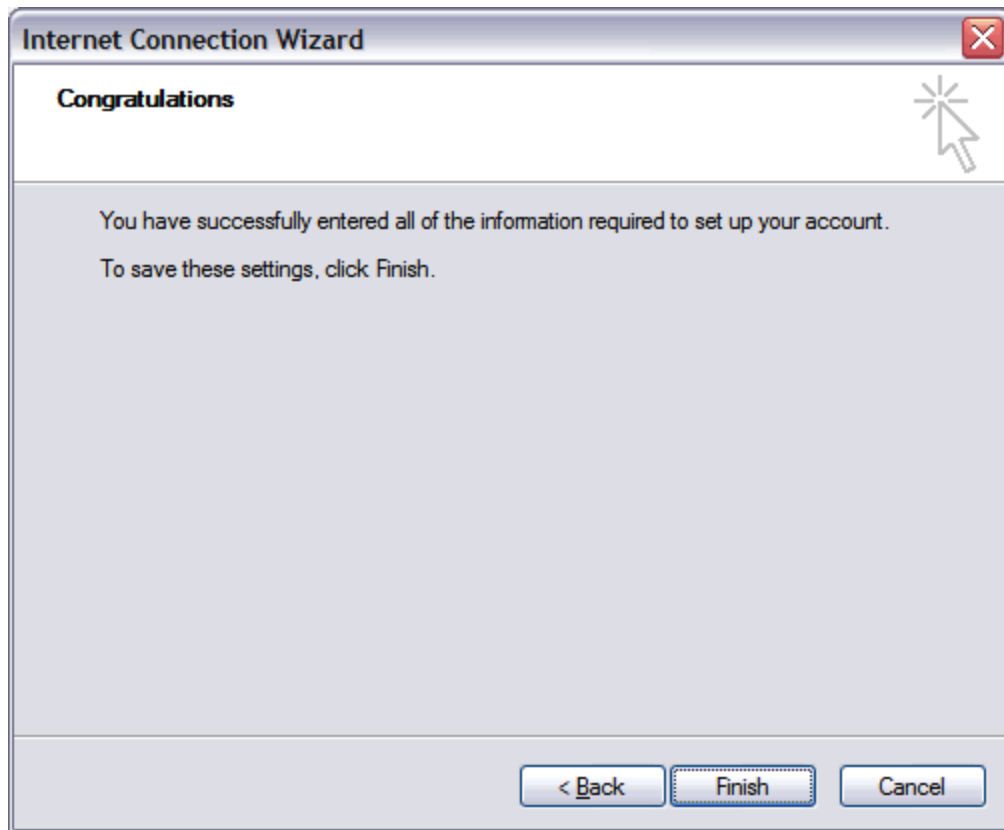
At the bottom of the dialog box, there are three buttons: "< Back", "Next >", and "Cancel".

6. In the Account Name and Password fields, enter your email address and password, and then click **Next** .

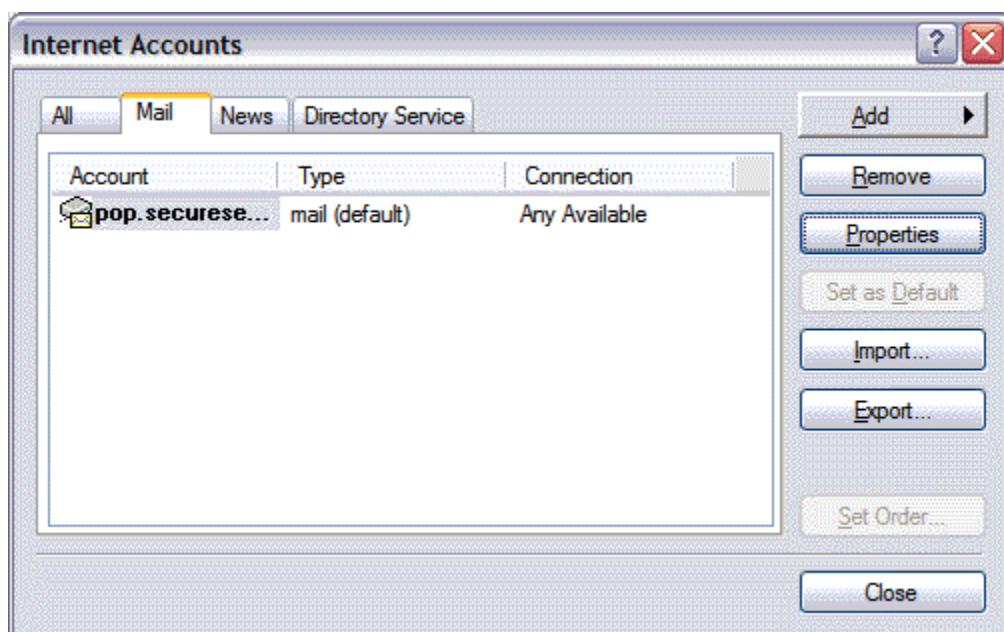


The screenshot shows a dialog box titled "Internet Connection Wizard" with a sub-header "Internet Mail Logon". The main instruction reads: "Type the account name and password your Internet service provider has given you." There are two input fields: "Account name:" containing "jsmith@coolexample.com" and "Password:" containing seven dots. A checked checkbox labeled "Remember password" is located below the password field. Below this, a paragraph explains: "If your Internet service provider requires you to use Secure Password Authentication (SPA) to access your mail account, select the 'Log On Using Secure Password Authentication (SPA)' check box." This is followed by an unchecked checkbox labeled "Log on using Secure Password Authentication (SPA)". At the bottom, there are three buttons: "< Back", "Next >", and "Cancel".

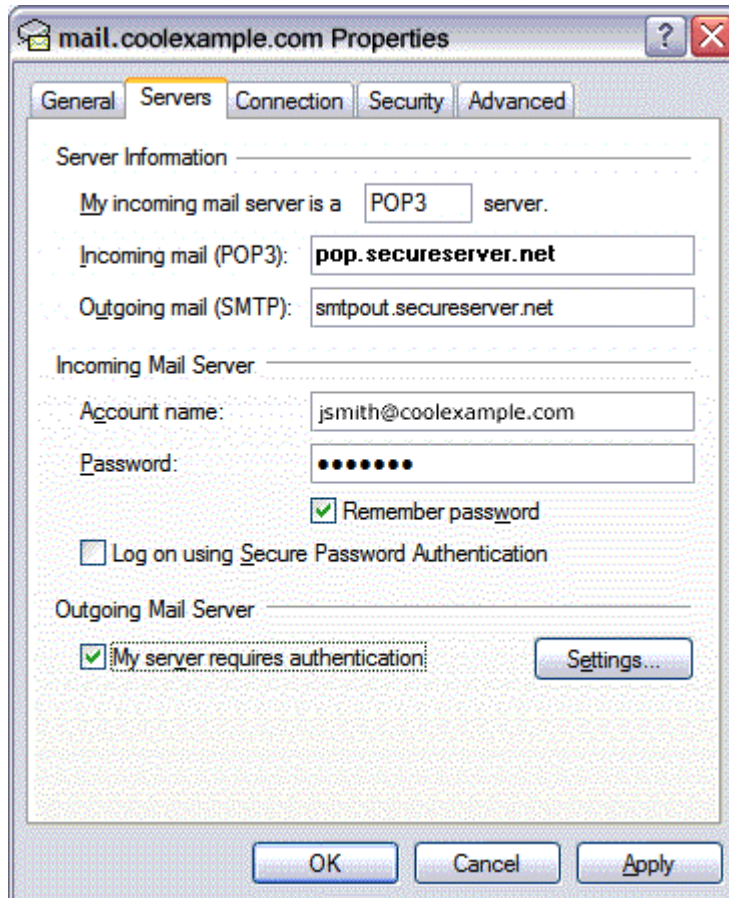
7. On the setup confirmaiton page, click **Finish**.



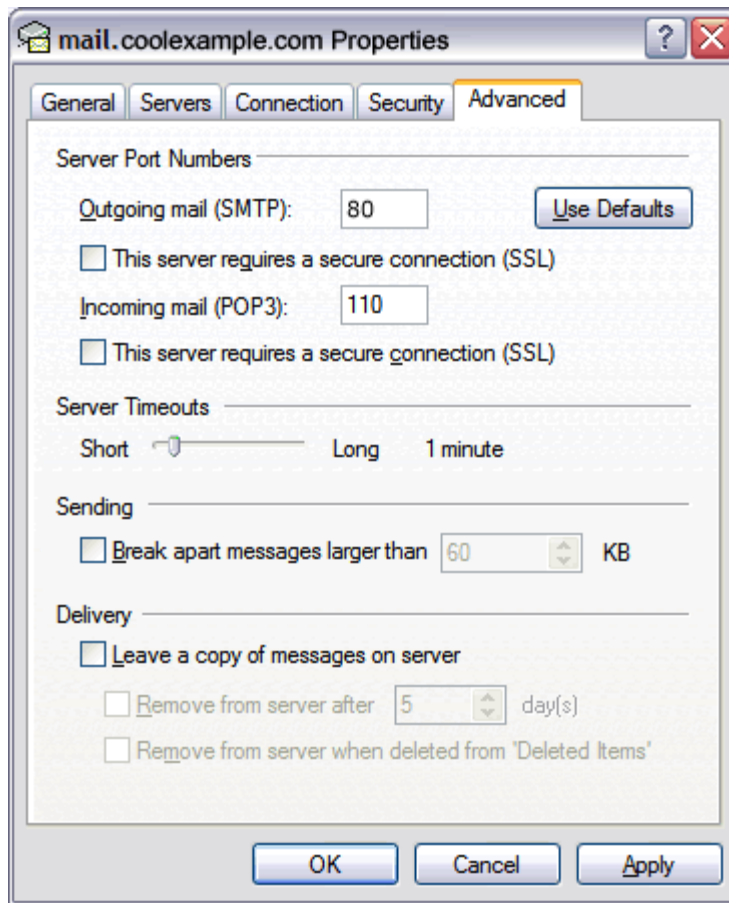
8. On the Mail tab, select the account you just created and then click **Properties**.



9. Go to the **Servers** tab.
10. Select **My server requires authentication**, and then click **Apply**.



11. Go to the **Advanced** tab.
12. In the Server Port Numbers section, change **Outgoing mail (SMTP)** to **80**, and then click **OK**.



13. (Optional) If you would like to keep a copy of your email messages stored on your email provider's servers, in the Delivery section, select **Leave a copy of messages on server**.

Your Outlook Express account is now set up. Click **Close** to close the Internet Accounts window and return to your Outlook Express.