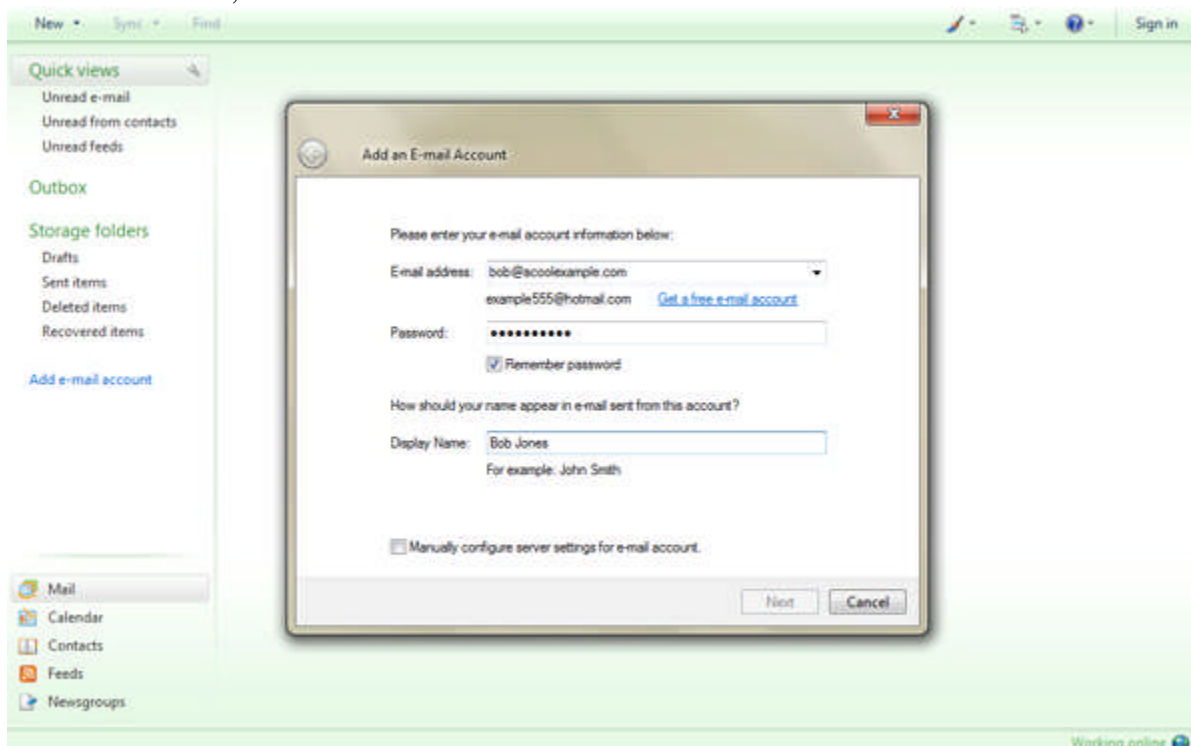


To Use Windows Live Mail with Your Email

1. Launch Windows Live Mail from the **Start Menu**.
2. In the navigation column, click **Add e-mail account**.

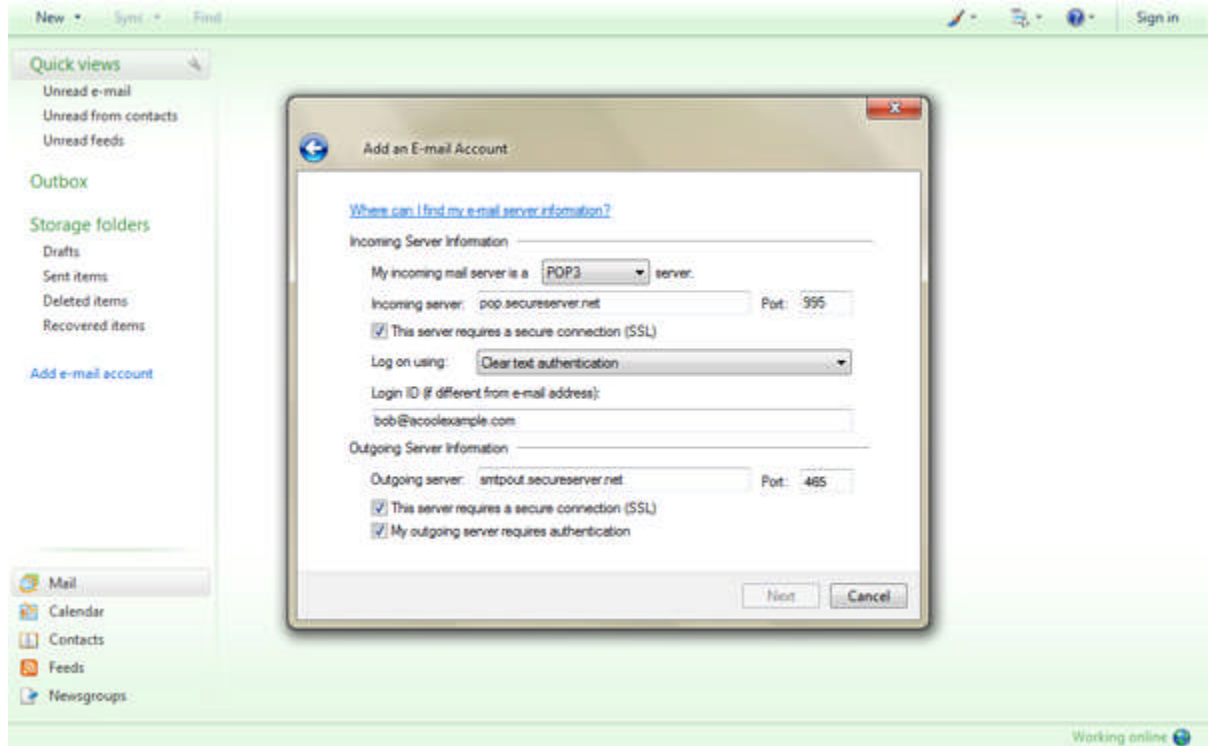


3. In the **Email Address** field, enter your full email address.
4. In the **Password** field, enter your password.
5. Select if you want to **Remember Password**.
6. In the **Display Name** field, enter how you want your name to display when email is sent from this account, and then click **Next**.



7. Select **POP3** for your server type.
8. In the **Incoming Server** field, enter **pop.secureserver.net**.

9. Incoming server **Port: 995**
10. Select **This server requires a secure connection (SSL)**.
11. Select to log on using **Clear text authentication**.
12. In the **Login ID** field, enter your **full email address**.
13. In the **Outgoing server** field, enter **smtpout.secureserver.net**.
14. Outgoing server **Port: 465**
15. Select **This server requires a secure connection (SSL)**.
16. Select **My outgoing server requires authentication**, and then click **Next**.



17. Click **Finish**.

